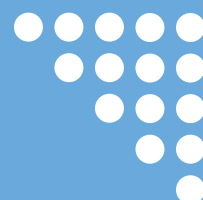
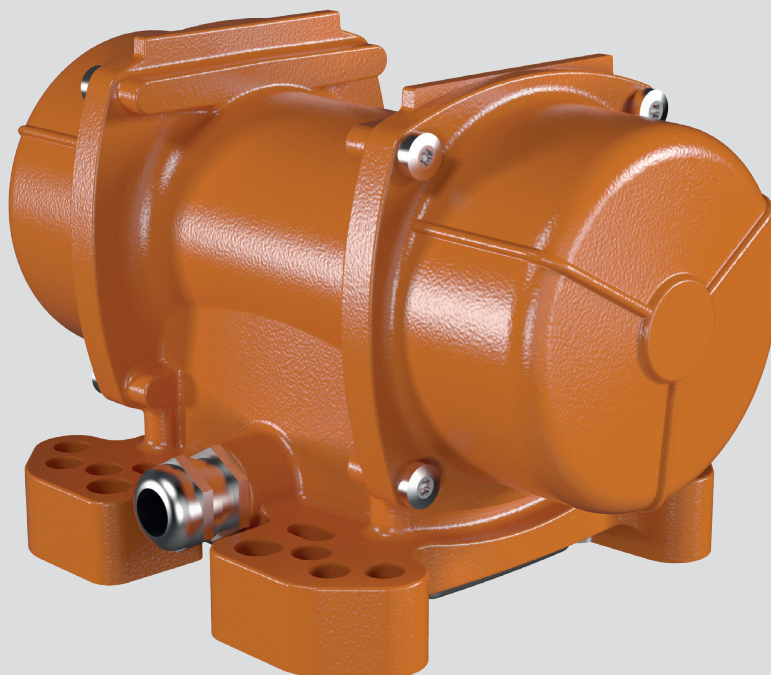


Brochure MVCC Electric Vibrator

Visit - www.prospare.co.uk | Call - 01773 814008 | Email - sales@prospare.co.uk

ProSpare Ltd. Registered in England No. 9278333
Registered Office: Bestwood Road, Pinxton, Nottinghamshire NG16 6NT
We reserve the right to modify or withdraw specifications or products without notice or obligation.





Technical features

Power supply

In direct current at 12 or 24V.

Conformity with Standards and Regulations

Electromagnetic Compatibility Directive 2014/30/UE; EN 61000-6-2, EN 61000-6-4, EN 13309, EN 60034-1.

Functioning

Continuous (S1) or intermittent duty at maximum declared centrifugal force and electric power.

Centrifugal force

Range extended up to 1520 kgf. (14,9 kN), with centrifugal force adjustable by varying weight position.

Mechanical protection

IP 66 according to IEC/EN 60529.

Protection against mechanical impacts

IK 08 according to IEC/EN 62262.

Ambient temperature

From -20°C to +40°C.

Fixing of the vibrator

In all positions and therefore without restriction.

Lubrication

Sealed ball bearings, lubricated "for life".

Terminal box

On MF models it's positioned underneath the vibrator, on the same side as the fixing base.

Electric motor

For models 3/100 and 3/200, but in extension to the larger sizes, asynchronous three-phase type with vacuum insulated winding supplied in direct current through an electronic card included in the vibrator.

Casing

In high-tensile aluminium alloy.

Bearing flange

In spheroidal or grey cast iron. The geometry of the flange transmits the load to the casing uniformly.

Motor shaft

In treated steel alloy (Isothermic hardening) resistant to stress.

Eccentric weights

Enable continuous adjustment of the centrifugal force.

Weight covers

In aluminum alloy for models 3/100-MF, 3/200-MF and 3/500; in AISI 304 stainless steel for other types.

Painting

Electrostatic surface treatment based on polymerised epoxy polyester powder in oven at 200°C. Tested in salt spray for 500 hours.

Direct current

DESCRIPTION			MECHANICAL SPECIFICATIONS				ELECTRICAL SPECIFICATIONS		
Code	Type	rpm	Static moment*	Centrifugal force		Weight	Power rating	Max. current	
			kgmm	kg	kN			12V	24V
600418	MVCC 3/100-S08 MF	3000	12,1	122	1,20	5,7	190	8,00	4,00
600419	MVCC 3/200-S08 MF	3000	20,2	203	1,99	6,3	190	8,00	4,00
600469	MVCC 3/500	3000	58,0	584	5,72	13,0	270	22,5	11,3
600405	MVCC 3/1200	3600	78,0	1130	11,1	20,0	530	-	22,0
600464	MVCC 3/1500	3600	105	1520	14,9	21,0	530	-	22,0

* Working moment = 2 x static moment.

The MF models have a multi-hole fixing base to adapt to different centre distances of drilling.

The MVCC series is supplied with a special high-resistance synthetic rubber power supply cable measuring 2.5 m.

The technical data and models listed in this catalogue are not binding. Italvibras reserves the right to modify them without prior notice.

CE

EAC

Fig.	A	B	C	Holes				F	H	I	L	M	N	P	Cable entry
				D	E	ØG	N°								
MB	207	146,5	162	See drawing MB				25	88	46	103	158	117	80	M20x1,5
MB	231	146,5	162	See drawing MB				25	88	58	103	158	117	80	M20x1,5
A	288	203	167	105	140	13	4	30	82,5	65	145	146	160	-	M25x1,5
A	308	211	205	120	170	17	4	45	93,5	63	168	174	182	-	M25x1,5
A	308	211	205	120	170	17	4	45	93,5	63	168	174	182	-	M25x1,5



Make it better.