

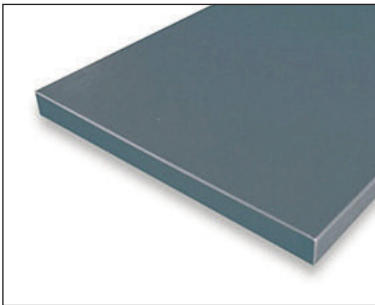
# DataSheet

## Polyethylene Flow Linings

# ProSpare

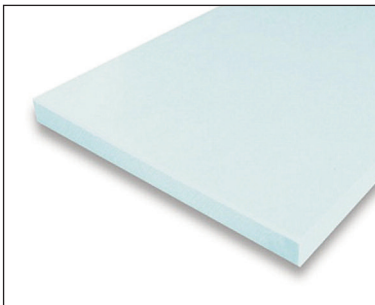
ProSpare polyethylene liners solve raw material flow problems. Exceptionally low surface friction helps keep even the most stubborn raw materials flowing in bins, chutes and hoppers. We offer a range of high performance, wear resistant, UHMWPE grades which are proven to perform in a diverse range of applications and environments.

Polyethylene is light-weight and easy to handle. It is also simple to cut, form & fix, providing hassle free installation. Three specially selected grades are available from stock in two sheet sizes and a number of thicknesses.



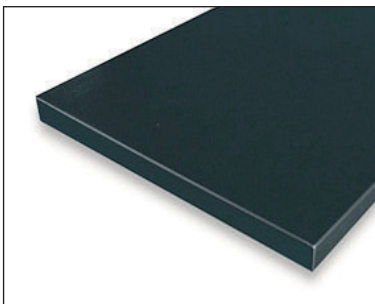
### **Matrox Premium (grey)**

The most advanced grade in our range. Lowest surface friction and maximum wear life. Promotes the flow of even the most difficult to handle materials. Lubricating additives produce a Teflon like finish for the lowest coefficient of friction on the market. Abrasion, impact, chemical and oil resistant. UV stabilised.



### **PE1000 Natural (white)**

High specification polyethylene with extremely low surface friction and high levels of wear resistance. The trademark white grade was traditionally considered the optimum choice by many until the introduction of the new Premium grade. Still widely used and trusted to deliver effective performance at a competitive price.



### **PE1000 Repro (black)**

A proportion of regenerated content makes this a very economical option. This low cost grade offers value for money with low friction and good levels of abrasion resistance. Performs very successfully in less demanding applications and is one of our best sellers.



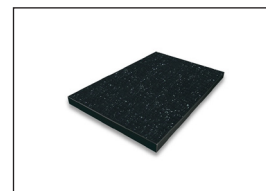
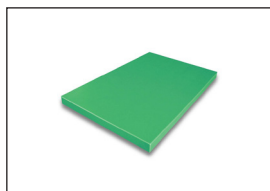
## Stock grades and sizes

	Matrox Premium	PE1000 Natural	PE1000 Repro
2m x 1m x 10mm	✓	✓	✓
2m x 1m x 15mm	✓	✓	✓
2m x 1m x 20mm	✓	✓	✓
3m x 1.25m x 10mm	✓	✓	✓
3m x 1.25m x 15mm	✓	✓	✓
3m x 1.25m x 20mm	On request	✓	✓

A full range of material specification sheets & product handling information is available upon request.

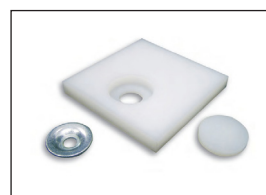
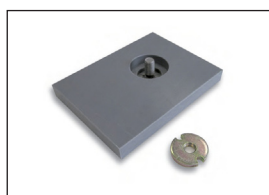
## Specialist grades available upon request

In addition to our stocked range of polyethylene liners, a number of specialist application specific Matrox grades are available upon request. Including High Temp, Anti Static and Flame Retardant versions.



## Comprehensive range of fixing options

Many clients simply opt to install polyethylene liners with self tapping csk screws and edge capping. For large scale or more challenging applications we offer a range of specialist fixings which mount beneath the liner surface to avoid impeding product flow and protect bolt heads. Comprehensive installation instructions can be found on our website or via our sales office.



**ProSpare**

Bestwood Road • Pinxton • Nottinghamshire NG16 6NT  
Tel • +44 (0)1773 814008 • Fax • +44 (0)1773 860055 • Email • sales@prospare.co.uk

[prospare.co.uk](http://prospare.co.uk)

We reserve the right to modify or withdraw specifications or products without notice or obligation.