

DataSheet

Matrox Polyethylene

ProSpare

Matrox Ultra High Molecular Weight Polyethylene (UHMWPE) liners solve raw material flow problems. Exceptionally low surface friction helps keep even the most stubborn raw materials flowing in bins, chutes, hoppers and feeders. Matrox Premium is the most advanced grade in our range and has been proven time and again to perform where other polyethylene's fail.

Lubricating additives produce a Teflon like finish for the lowest coefficient of friction on the market. Lower friction reduces the effects of abrasion for significantly longer wear life. Matrox also offers UV stabilisation and high levels of abrasion, impact, chemical and oil resistance, making it a durable, cost effective choice.



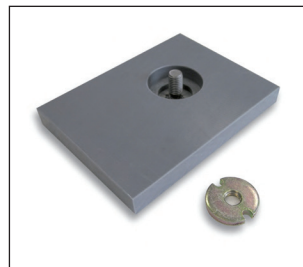
- High performance flow promotion**
- Exceptionally low surface friction**
- Excellent wear and impact resistance**
- UV resistant**
- Range of sizes & thicknesses**
- Easy to handle and install**

Matrox is light-weight, easy to handle and simple to cut, form and fix - installation is simple. Many clients opt to install Matrox with self tapping csk screws and edge capping. For large scale or more challenging applications we offer a range of specialist fixings which mount beneath the liner surface to avoid impeding product flow and protect bolt heads.

We stock 2m x 1m and 3m x 1.25m sheets in a range of thicknesses. A number of specialist application specific Matrox grades are also available upon request. Including High Temp, Anti Static and Flame Retardant versions.



Ideal for bins, chutes, hoppers & feeders



Range of specialist fixing options



Simple to cut, form and fix

ProSpare

Bestwood Road • Pinxton • Nottinghamshire NG16 6NT
Tel • +44 (0)1773 814008 • Fax • +44 (0)1773 860055 • Email • sales@prospare.co.uk

prospare.co.uk

We reserve the right to modify or withdraw specifications or products without notice or obligation.