

DataSheet

ProSpare

Starclean® Belt Cleaners - Secondary

The Starclean 800 series secondary cleaner provides the benchmark for high efficiency removal of fines and moisture, offering the highest levels of conveyor cleaning performance. This secondary position cleaner is fitted in the 'under belt' position on or behind the nip point.

Starclean utilises patented TWIST-SWING® technology to provide optimum contact between the scraper and belt. Each blade segment is individually tensioned against the belt, as blade segments start to wear the optimum pressure is maintained from the spring-like properties of the blade design. The individual blades adapt to the belt surface, ensuring consistent and efficient cleaning performance.



Highly effective cleaning

Consistent blade to belt contact

Individually tensioned blade segments

Simple to use tensioning devices

Minimal adjustment required

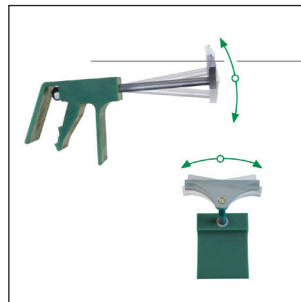
Highly abrasion resistant tungsten blades

The modular system is extremely quick and simple to maintain. Starclean blade segments snap into the blade base without the need for tools and are tensioned against the belt with an operator friendly tensioning device, significantly reducing downtime to get conveyors up and running more quickly.

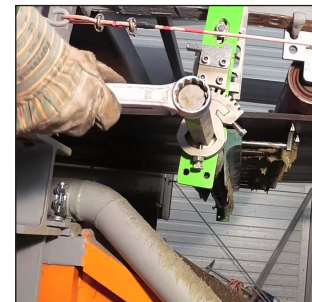
The 800 series secondary cleaner is a high performance cleaner and is designed for use on belts in good condition with vulcanised joints.



Toolless blade replacement

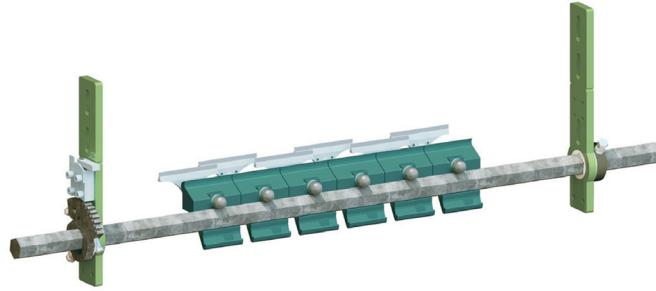


TWIST-SWING® individual blade tensioning



Easy to use, operator friendly tensioners

Key components and options:



800 series tensioner

This ratchet based tensioner is extremely simple to use. Simply crank the snap-action ratchet to add tension, alternatively pull the quick release lever to instantly disengage the blades for easy replacement. The compact, flexible design allows mounting in even the tightest of areas.

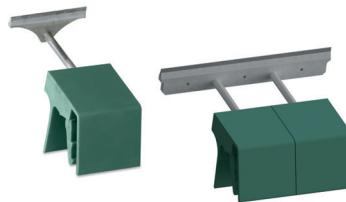


Tungsten carbide scraper blades

These overlapping blades are located using a snap-in polyurethane foot which locks the segment in position and also acts as a robust spring to maintain optimum belt contact. The pivoting blades individually adjust to the belt and the small tungsten contact area produces optimum cleaning performance at the lowest contact pressure.

Light / medium duty applications - Type 53sn

- Belt widths typically up to 1200mm
- Belt speeds up to 2.8m/s
- Integrated polyurethane pre-cleaning lip



Heavy duty applications - Type 56n

- Belts widths 1400mm upwards
- Belts speeds up to 4m/s
- Heavy duty construction, protective PU apron

STARCLEAN
SMART CONVEYING SOLUTIONS



ProSpare

Bestwood Road • Pinxton • Nottinghamshire NG16 6NT
Tel • +44 (0)1773 814008 • Fax • +44 (0)1773 860055 • Email • sales@prospare.co.uk

prospare.co.uk

We reserve the right to modify or withdraw specifications or products without notice or obligation. Ex-stock subject to prior sale.